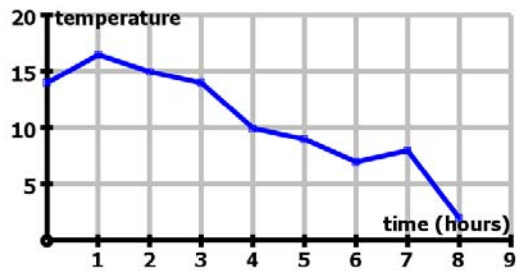


LINE GRAPHS

Name: _____

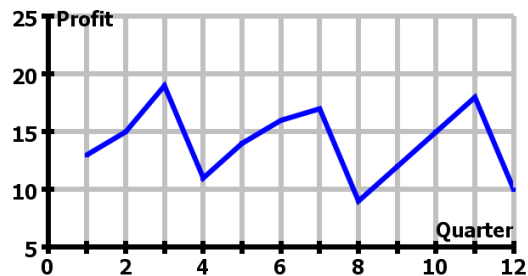
Assessment Criteria: Create and interpret line graphs where the intermediate values have meaning

1. The line graph shows the outside temperature in degrees Celsius for a nine hour period. What is the temperature at 4 hours?

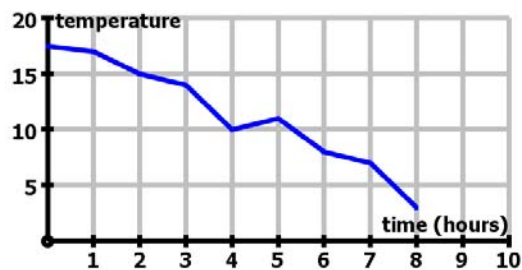


_____ °C

2. The line graph shows the profits for a company over a three year period. What is the profit for the fifth quarter?

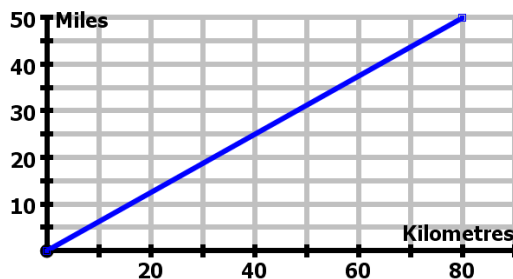


3. The line graph shows the outside temperature in degrees Celsius for an eight hour period. What is the time when the temperature is 11°C?



_____ hours

4. The conversion graph shows how to convert from miles into a rough equivalent for kilometres



- a) Roughly how many miles are equivalent to 20 kilometres?

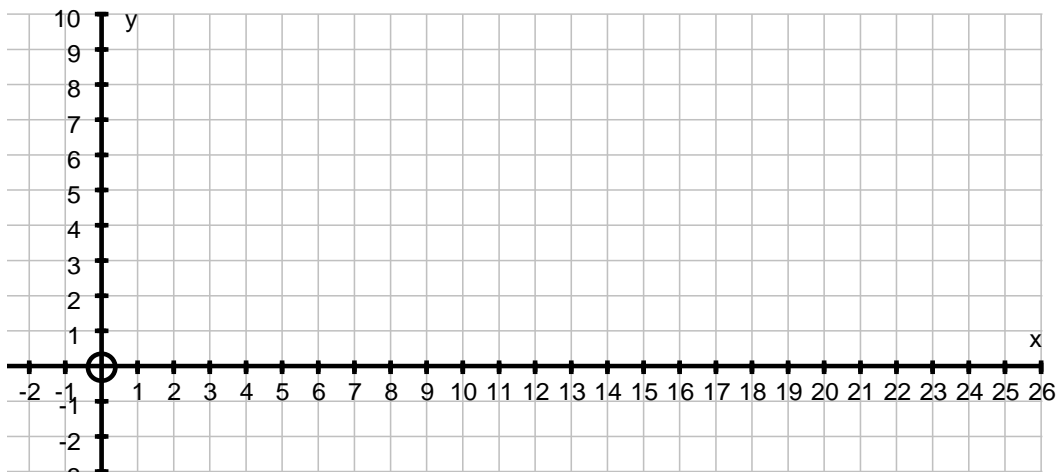
_____ miles

- b) Roughly how many kilometres are equivalent to 60 miles?

_____ km

5. The height of a sunflower against time can be shown on a graph. The number of petals on a group of sunflowers cannot be shown on a line graph. Explain why.

6. 4.5 litres is roughly equivalent to 1 gallon. Using this fact, create a line graph that can be used to convert between litres and gallons.



Overall, I think my success level is:

Low High

Q	LINE GRAPHS	😊	☹️
	I know when it is correct to use a line graph to represent data		
	I can interpret line graphs		
	I can create line graphs		
	<i>I can show understanding of situations by describing them mathematically using symbols, words and diagrams</i>		
	<i>I can identify and obtain necessary information to carry through a task and solve mathematical problems</i>		

I need to practise ...